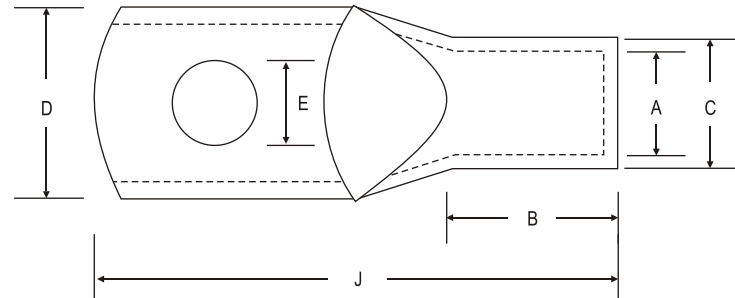


# SOLDERING TYPE COPPER TERMINALS (HEAVY DUTY)

Braco Soldering Type Heavy Duty Copper Terminals are made out of EC grade copper and used where high value of current flow is desired and due to soldering loose terminations are avoided, thereby preventing heating at termination ends. Terminals are tin plated to avoid oxidization and to achieve maximum corrosion protection.



**Material Copper BS: 1977**  
**Finish: Electro Tinned**

AMPS	Dimensions						Code No.
	E	A	C	D	B	J	
15	5.1	4.8	6.2	9	10	24	BSS - 6
30	7.1	6.4	8.0	12	13	33	BSS - 7
60	10.3	9.5	11.3	17	14	44	BSS - 8
100	11.9	11.9	13.9	21	19	55	BSS - 9
150	13.5	14.3	17.1	25	22	62	BSS - 10
200	13.5	16.7	19.9	29	29	78	BSS - 11
300	16.7	20.6	24.2	36	32	86	BSS - 12
400	16.7	23.8	27.8	41	38	100	BSS - 13
500	19.8	26.2	31.4	46	44	111	BSS - 14
300	18.0	26.2	34.2	49	44	111	BSS - 28
500	22.0	31.7	40.9	59	48	121	BSS - 29
630	26.0	36.5	46.1	67	56	139	BSS - 30

