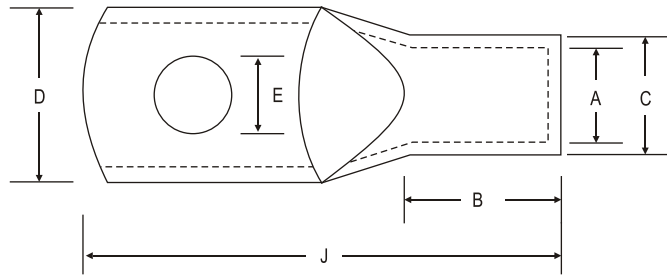


SOLDERING TYPE COPPER TERMINALS (LIGHT DUTY)

Braco Soldering Type Copper Terminals are made out of EC grade copper and used where high value of current flow is desired and due to soldering loose terminations are avoided, thereby preventing heating at termination ends. Terminals are tin plated to avoid oxidization and to achieve maximum corrosion protection.



Material Copper BS: 1977
Finish: Electro Tinned

| AMPS | Dimensions | | | | | | Code No. |
|------|------------|------|------|----|----|-----|----------|
| | E | A | C | D | B | J | |
| 15 | 3.2 | 3.9 | 4.8 | 7 | 7 | 19 | CTS - 01 |
| 30 | 5.1 | 5.2 | 6.3 | 9 | 9 | 23 | CTS - 02 |
| 60 | 6.4 | 8.1 | 9.5 | 14 | 14 | 36 | CTS - 03 |
| 100 | 9.5 | 10.9 | 12.7 | 19 | 19 | 49 | CTS - 04 |
| 150 | 9.5 | 13.9 | 15.9 | 24 | 23 | 57 | CTS - 05 |
| 200 | 12.7 | 16.6 | 19.0 | 28 | 27 | 66 | CTS - 06 |
| 300 | 12.7 | 19.0 | 22.2 | 33 | 28 | 80 | CTS - 07 |
| 400 | 15.9 | 22.2 | 25.4 | 38 | 32 | 89 | CTS - 08 |
| 500 | 19.0 | 25.4 | 28.6 | 43 | 38 | 105 | CTS - 09 |
| 600 | 19.0 | 27.8 | 31.8 | 47 | 44 | 115 | CTS - 10 |
| 800 | 23.8 | 31.7 | 38.1 | 56 | 47 | 121 | CTS - 11 |
| 1000 | 23.8 | 38.1 | 44.5 | 66 | 56 | 152 | CTS - 12 |
| 1000 | - | 50.0 | 57.3 | 85 | 62 | 164 | CTS - 95 |

