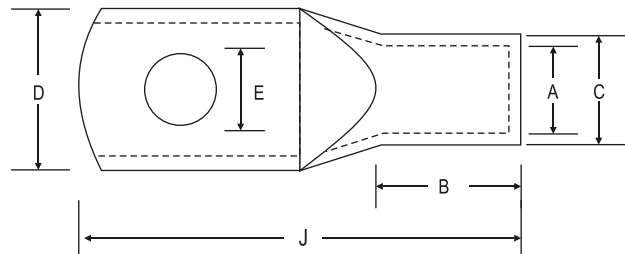


COPPER CRIMPING TERMINALS FOR ALUMINIUM CONDUCTOR (LIGHT DUTY)

Material : Copper BS :1977
Finish : Electro Tinned

Braco Copper Tube Crimping Terminals are manufactured from electrolytic copper tube. The dimensions of the tube are designed to obtain the most efficient electrical conductivity and mechanical strength to resist vibration and pull out. These are used for terminating any size of cables, electrical switching equipments, where vibration is critical.

Terminals are annealed to guarantee optimum ductility which is an absolute necessity for connectors which will have to withstand the sever deformation arising when compressed and any bending of the palm during installation. In application subject to vibration, terminals still have to perform a reliable connection. Annealing plays a vital role in avoiding cracking or breaks between the barrel and plam. Tin plating on the terminals avoids oxidization and achieves maximum corrossion protection.



Size Sq. mm	Dimensions						Code No.
	E	A	C	D	B	J	
2.5	5.2	2.0	3.7	9	7	20	CT - 05
4	6.2	3.1	4.8	11	7	22	CT - 06
6	6.2	3.8	5.5	11	9	24	CT - 07
10	6.2	4.4	6.2	11	9	24	CT - 08
16	6.2	5.3	7.1	11	12	30	CT - 09
25	6.2	7.0	9.0	13	12	37	CT - 10
35	6.2	8.0	10.0	15	12	37	CT - 11
	8.2	8.0	10.0	15	12	37	CT - 12
50	6.2	9.2	11.2	16	16	45	CT - 13
	8.2	9.2	11.2	16	16	45	CT - 14
	10.2	9.2	11.2	16	16	45	CT - 15
70	8.2	11.5	13.8	20	18	56	CT - 16
	10.2	11.5	13.8	20	18	56	CT - 17
	12.7	11.5	13.8	20	18	56	CT - 18
95	10.2	12.8	15.6	23	20	58	CT - 19
	12.7	12.8	15.6	23	20	58	CT - 20
120	10.2	14.8	17.8	26	22	62	CT - 21
	12.7	14.8	17.8	26	22	62	CT - 22
	16.2	14.8	17.8	26	22	62	CT - 23
150	10.2	16.0	19.6	28	26	70	CT - 24
	12.7	16.0	19.6	28	26	70	CT - 25
	16.2	16.0	19.6	28	26	70	CT - 26
185	12.7	18.0	22.0	32	30	83	CT - 27
	16.2	18.0	22.0	32	30	83	CT - 28
225	16.2	20.0	24.0	35	34	95	CT - 231
240	16.2	22.0	26.0	38	36	97	CT - 29
	20.3	22.0	26.0	38	36	97	CT - 30
300	16.2	24.0	28.7	42	39	103	CT - 31
	20.3	24.0	28.7	42	39	103	CT - 32
400	20.3	28.0	33.2	49	44	116	CT - 33
500	20.3	30.0	36.0	53	48	120	CT - 34
630	20.3	35.0	41.5	61	55	137	CT - 35
800	-	39.0	46.3	67	65	165	CT - 62
1000	-	43.0	53.8	76	90	210	CT - 76